

# MILLERCOMM93

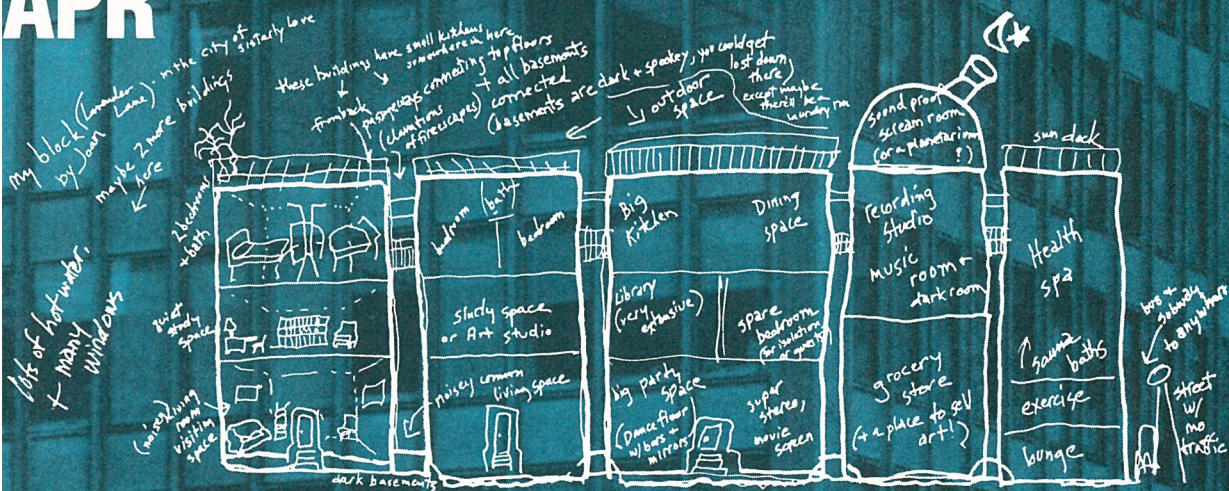
## The Spaces Between Us: Gender, Race, Class and the Built Environment

Leslie Kanes Weisman  
School of Architecture  
New Jersey Institute of Technology, Newark

15  
APR

Thursday 8:00pm 1993

Auditorium, Room 2100, Music Building  
1114 West Nevada Street, Urbana  
University of Illinois at Urbana-Champaign



"Architecture thus defined is a record of deeds done by those who have had the power to build. It is shaped by social, political, and economic forces and values embodied in the forms themselves, the processes through which they are built, and the manner in which they are used. Creating buildings involves moral choices that are subject to moral judgment."

Discrimination by Design: A Feminist Critique of the Man-Made Environment (University of Illinois Press, 1992)

Office of the President  
Office of the Chancellor  
Office of the Vice Chancellor for Research and the Graduate College  
College of Fine and Applied Arts  
School of Social Work  
School of Art and Design  
Department of Civil Engineering  
Department of English  
Department of Geography  
Department of History  
Department of Urban and Regional Planning  
Campus Honors Program  
La Casa Cultural Latina  
Office of Real Estate Research

Program for the Study of Cultural Values and Ethics  
Small Homes Council  
WILL Radio  
Women, Information Technology, and Scholarship Colloquium  
Women in International Development  
Women's Studies Program  
Unit One  
University of Illinois Press  
The Center for Advanced Study  
George A. Miller Endowment  
George A. Miller Committee